



# 贝诺智能

Dongguan Benoy Intelligent Technology CO., LTD.

## 东莞市贝诺智能科技有限公司

Dongguan Benoy Intelligent Technology CO., LTD.

工厂地址: 东莞市大朗镇金朗北路259号

259, jinlang North Road, Dalang Town, Dongguan City, Guangdong, China

办公室地址: 东莞市松山湖晨夕路1号23栋702室

702, building 23, No.1 Chenxi Road, Songshan Lake, Dongguan City, Guangdong, China

邮箱Email: sales@benoyknit.com

网址 Web: www.benoyknit.com

电话Tel: +86 18103072771



China Knitting Solutions Manufacturing Expert

# CONTENTS

## 目录

公司简介 / Company Profile	00
单系统电脑横机B52-S1S /Single System Computerized Flat Knitting Machine	01
经济型双系统电脑横机B52-E1S /Single-Double System Computerized Flat Knitting Machine	03
双系统电脑横机B52-D1S /Double System Computerized Flat Knitting Machine	05
飞织鞋面机B36-T1V /3D Flyknit Shoe Upper Knitting Machine	07
高速织领机B80-D2C / High Speed Collar Knitting Machine	09
产品细节 /Product Details	11
横机易损零配件 /Wear-prone Parts	13
毛衣编织 /Knitting Sweater	14
鞋面编织 /Knitting Shoe Vamp	15
领口、袖口编织 /Knitting Collar, Cuff	16

## Company Profile 公司简介

东莞市贝诺智能科技有限公司成立于2003年，是一家集高速电脑横机与飞织鞋面机的设计，研发，生产，销售于一体的针织解决方案制造商。公司位于广东省东莞市大朗镇，并在松山湖高新区设有销售部。我们的工厂已通过ISO9001质量管理体系认证，并且所有横机都通过了CE认证，拥有多项外观专利与技术专利。在技术高度密集的针织机械制造业中，我们凭借独特的技术创新，良好的市场口碑，完整的售后服务体系，赢得了广大客户的信任。我们会是你值得信赖的商业合作伙伴。

Dongguan Benoy Intelligent Technology Co., Ltd. was established in 2003. It is a knitting solution manufacturer in high-speed computerized flat knitting machines and flying knitting upper knitting machines, integrating the design, development, production and sales. The factory is located in Dalang Town, Dongguan City, Guangdong Province, and has a sales office in Songshan Lake High-tech Zone. Our factory has passed ISO9001 quality management system certification, and all flat knitting machines are confirm to CE certification. We also got many appearance patents and technical patents. In the highly technologically intensive knitting machinery manufacturing filed, we have won the trust of widely customers with our unique technological innovation, good market reputation, and complete after-sales service system. We will be your reliable business partner.





# 单系统电脑横机 B52-S1S

## Single System Computerized Flat Knitting Machine



### Advantage 机器概述

1. 对皮带轮传动结构进行了优化,采用了高质量伺服电机,大大提高了机头的速度。
  2. 机头小巧,能快速返回,提高了工作效率。
  3. 储纱器协助储纱,提高了织物的平整度。
  4. 针床采用直选针式,结构简单,经热处理后可持续高效工作。
1. The cam structure optimization, used the motor model, greatly improved the speed of needle transfer.
  2. Small carriage, can return fast, improved work efficiency.
  3. Cooperation the yarn storage improved the flatness of fabric.
  4. Needle bed adopts the milling flute method with simple structure, it can sustain high efficiency working after heat treatment.

### Main Parameters 主要技术参数

型号 Series	单系统电脑横机 Single System Computerized Flat Knitting Machine
针距 Gauge	5G 7G 9G 12G 13G 14G 16G
幅宽 Knitting Width	44" 52" 68" 80"
编织系统 Knitting System	单机头单系统 Single carriage, single system
机器速度 Knitting Speed	最高速度1.6米/秒; 拥有32段可调速度 Max 1.6m/s, 32 section adjustable
编织功能 Knitting Function	翻针, 紧吊目, 可变度目, 挑孔, 嵌花, 提花, 明收针, 暗收针等花型编织 Transfer, tuck, intarsia, jacquard, hide, or apparent shaping and other regular or irregular patterns
翻针功能 Transfer cam	三角复合式设计, 单/双系统皆可单独或同时翻针, 也可一系统编织, 达到高效生产 The transfer cam is compose designed, single or double cam system all can transfer which will achieve to high production efficiency knit.
摇床 Racking	马达驱动, 最大左右横移达2英寸 Motor drive, the maximum racking within 2 inches
选针器 Needle actuator	8段电子选针器 8 section electronic needle actuator
收卷系统 Roller device	高位罗拉, 32段自动控制, 分段调节 High-order Roller, 24 section automatic control, subsection adjustable
针迹密度 Stitch density	32段电子控制, 步进马达控制调节密度, 可调节范围0-650 Controlled by 32 section electricity, density adjustment driven by stepping motor, the adjustable range:0-650
换色系统 Yarn feeder	1*6纱嘴组配置在3根双面导轨的左右两侧 1*6 yarn carriers are arranged on the left and right sides of the 3 double side guide rails.
传送装置 Transmission system	皮带传动, 交流伺服马达控制 Belt drive, AC servo motor control.
资料输入 Data input	通过U盘、网络输入输出花型 Input and output patterns via USB, PC and Internet
自停装置 Protection system	断纱、纱结、卷布、撞针、件数完成、超负荷、指定行停车、程序错误等 Automatic stopping device if yarn broken, yarn knot, batching, striking, completion, overload, designated starting and stopping, program error
安全装置 Safety device	紧急停车装置; 切断电源装置; 报警指示灯; 全机覆盖降低噪音和防尘的护盖 (带有停车感应器) The whole machine cover to reduce noise and dust, the protecting cover is equipped with stopping sensor, emergency stopping and power off device
控制系统 Control system	恒强/睿能系统 Hengqiang/Raynen system 屏幕采用LCD触摸屏显示器, 图形化界面, 可存入大量花型文件, 并可根据生产需求随时调用使用 The screen adopts LCD touch screen display, graphical interface, can store a large number of pattern files, and can be called at any time according to production needs. 通过屏幕检查页面可查看到三角的工作状态及实际位置; 并且在机器运行时随时进行调整, 最大限度方便操作。 Through the screen checking page, you can view the working status and actual position of the cam; and adjust it at any time while the machine is running, which is most convenient for operation. 控制系统 (软件部分) 及制版系统升级方便, 为无偿服务 The control system (software part) and the pattern-making system are easily upgraded and are free of charge. 可多语种版本切换(根据客户要求设置) Multi-language version switching (Set up according to customer requirements)
电源 Power	电压: 单相AC220V/380V 功率: 1.5KW, CMOS技术, 停电瞬间具有记忆功能 Voltage: Single phase AC 220-380V, Power:1.5KW CMOS technology, has the memory function at power-off moment

# 经济型双系统电脑横机 B52-E1S

## Single-Double System Computerized Flat Knitting Machine



### Advantage 机器概述

1. 针床采用直选针式, 结构简单, 经热处理后可持续高效工作。
  2. 单机头双系统, 编织效率提高80%。
  3. 对皮带轮传动结构进行了优化, 采用了高质量伺服电机, 大大提高了机头的速度。
  4. 机头小巧, 能快速返回, 提高了工作效率。
  5. 储纱器协助储纱, 提高了织物的平整度。
1. Needle bed adopts the milling flute method with simple structure, it can sustain high efficiency working after heat treatment.
  2. Single Carriage with double system, 80% increase in knitting efficiency.
  3. The cam structure optimization, used the motor model, greatly improved the speed of needle transfer.
  4. Small carriage, can return fast, improved work efficiency.
  5. Cooperation the yarn storage improved the flatness of fabric.

### Main Parameters 主要技术参数

型号 Series	经济型双系统电脑横机 Single-Double System Computerized Flat Knitting Machine
针距 Gauge	3.5G 5G 7G 9G 12G 13G 14G 16G
幅宽 Knitting Width	44" 52" 60" 68" 80"
编织系统 Knitting System	单机头双系统 Single carriage, double system
机器速度 Knitting Speed	最高速度1.6米/秒; 拥有32段可调速度 Max 1.6m/s, 32 section adjustable
编织功能 Knitting Function	翻针, 紧吊目, 可变量目, 挑孔, 嵌花, 提花, 明收针, 暗收针等花型编织 Transfer, tuck, intarsia, jacquard, hide, or apparent shaping and other regular or irregular patterns
翻针功能 Transfer cam	三角复合式设计, 单/双系统皆可单独或同时翻针, 也可一系统编织, 达到高效生产 The transfer cam is compose designed, single or double cam system all can transfer which will achieve to high production efficiency knit.
摇床 Racking	马达驱动, 最大左右横移达2英寸 Motor drive, the maximum racking within 2 inches
选针器 Needle actuator	8段电子选针器 8 section electronic needle actuator
收卷系统 Roller device	高位罗拉, 32段自动控制, 分段调节 High-order Rollar, 32 section automatic control, subsection adjustable
针迹密度 Stitch density	32段电子控制, 步进马达控制调节密度, 可调节范围0-650 Controlled by 32 section electricity, density adjustment driven by stepping motor, the adjustable range:0-650
换色系统 Yarn feeder	1*8纱嘴组配置在4根双面导轨的左右两侧 1*8 yarn carriers are arranged on the left and right sides of the 4 double side guide rails.
传送装置 Transmission system	皮带传动, 交流伺服马达控制 Belt drive, AC servo motor control.
资料输入 Data input	通过U盘、网络输入输出花型 Input and output patterns via USB, PC and Internet
自停装置 Protection system	断纱、纱结、卷布、撞针、件数完成、超负荷、指定行停车、程序错误等 Automatic stopping device if yarn broken, yarn knot, batching, striking, completion, overload, designated starting and stopping, program error
安全装置 Safety device	紧急停车装置; 切断电源装置; 报警指示灯; 全机覆盖降低噪音和防尘的护盖 (带有停车感应器) The whole machine cover to reduce noise and dust, the protecting cover is equipped with stopping sensor, emergency stopping and power off device
控制系统 Control system	恒强/睿能系统 Hengqiang/Raynen system 屏幕采用LCD触摸屏显示器, 图形化界面, 可存入大量花型文件, 并可根据生产需求随时调用使用 The screen adopts LCD touch screen display, graphical interface, can store a large number of pattern files, and can be called at any time according to production needs. 通过屏幕检查页面可看到三角的工作状态及实际位置; 并且在机器运行时随时进行调整, 最大限度方便操作。 Through the screen checking page, you can view the working status and actual position of the cam; and adjust it at any time while the machine is running, which is most convenient for operation. 控制系统 (软件部分) 及制版系统升级方便, 为无偿服务 The control system (software part) and the pattern-making system are easily upgraded and are free of charge. 可多语种版本切换(根据客户要求设置) Multi-language version switching (Set up according to customer requirements)
电源 Power	电压: 单相AC220V/380V 功率: 1.5KW, CMOS技术, 停电瞬间具有记忆功能 Voltage: Single phase AC 220-380V, Power:1.5KW CMOS technology, has the memory function at power-off moment



# 双系统电脑横机 B52-D1S

## Double System Computerized Flat Knitting Machine



### Advantage 机器概述

1. 机头快速往返运转。采用灵敏的伺服电机驱动装置实现机头快速往返运转，提高了20%以上的编织效率。
  2. 精心设计的针床出针角度，保证了织物的快速自主下落。
  3. 改进的沉降片系统使插针更加稳定。
  4. 摇床系统的特点是定位精确，反应迅速，机架在2英寸以内。
  5. 采用插片式针板，稳定，硬度高，使用寿命更长。可随时更换织针。
1. The fast cornering of carriage. Superior servo drive assembly makes the fast cornering of carriage come true, improved the efficiency of knitting more than 20%.
  2. Well-designed angle of needle bed tooth mouth to ensure rapid autonomous falling of fabrics.
  3. Improved sinker makes needle insertion more stable.
  4. Needle bed displacement system features precise positioning and rapid response, racking within 2 inch.
  5. Needle plates are replaceable and stable and with high hardness by using insert model, to make it longer service life.

### Main Parameters 主要技术参数

型号 Series	双系统电脑横机 Double System Computerized Flat Knitting Machine
针距 Gauge	3.5G 3-5-7G 7G 9G 12G 13G 14G 16G
幅宽 Knitting Width	52" 60" 68" 72" 80" 100"
编织系统 Knitting System	单机头双系统 Single carriage, three system
机器速度 Knitting Speed	最高速度1.6米/秒; 拥有32段可调速度 Max 1.6m/s, 32 section adjustable
编织功能 Knitting Function	翻针, 紧吊目, 可变量目, 挑孔, 嵌花, 提花, 明收针, 暗收针等花型编织 Transfer, tuck, intarsia, jacquard, hide, or apparent shaping and other regular or irregular patterns
翻针功能 Transfer cam	三角复合式设计, 单/双系统皆可单独或同时翻针, 也可一系统编织, 达到高效生产 The transfer cam is compose designed, single or double cam system all can transfer which will achieve to high production efficiency knit.
摇床 Racking	马达驱动, 最大左右横移达2英寸 Motor drive, the maximum racking within 2 inches
选针器 Needle actuator	8段电子选针器 8 section electronic needle actuator
沉降片 Sinker	步进马达驱动, 交叉沉降片最新设计, 可根据不同织物进行调整 Driven by stepping motor, latest cross-sinker system design, Can be adjusted for different fabrics
收卷系统 Roller device	高位罗拉, 32段自动控制, 分段调节 High-order Roller, 32 section automatic control, subsection adjustable
针迹密度 Stitch density	32段电子控制, 步进马达控制调节密度, 可调节范围0-650 Controlled by 32 section electricity, density adjustment driven by stepping motor, the adjustable range:0-650
送纱装置 Yarn forward device	送纱器以及储纱器(选配), 精确控制纱线张力, 确保整体织片质量 Yarn feeder and yarn storage device(optional), accurate control of yarn tension, to ensure the quality of the overall quality of the fabric
换色系统 Yarn feeder	2*8纱嘴组配置在4根双面导轨的左右两侧 2*8 yarn carriers are arranged on the left and right sides of the 4 double side guide rails.
传送装置 Transmission system	皮带传动, 交流伺服马达控制 Belt drive, AC servo motor control.
资料输入 Data input	通过U盘、网络输入输出花型 Input and output patterns via USB, PC and Internet
自停装置 Protection system	断纱、纱结、卷布、撞针、件数完成、超负荷、指定行停车、程序错误等 Automatic stopping device if yarn broken, yarn knot, batching, striking, completion, overload, designated starting and stopping, program error
安全装置 Safety device	紧急停车装置; 切断电源装置; 报警指示灯; 全机覆盖降低噪音和防尘的护盖 (带有停车感应器) The whole machine cover to reduce noise and dust, the protecting cover is equipped with stopping sensor, emergency stopping and power off device
控制系统 Control system	恒强/睿能系统 Hengqiang/Raynen system 屏幕采用LCD触摸屏显示器, 图形化界面, 可存入大量花型文件, 并可根据生产需求随时调用使用 The screen adopts LCD touch screen display, graphical interface, can store a large number of pattern files, and can be called at any time according to production needs. 通过屏幕检查页面可查看到三角的工作状态及实际位置; 并且在机器运行时随时进行调整, 最大限度方便操作。 Through the screen checking page, you can view the working status and actual position of the cam; and adjust it at any time while the machine is running, which is most convenient for operation. 控制系统(软件部分)及制版系统升级方便, 为无偿服务 The control system (software part) and the pattern-making system are easily upgraded and are free of charge. 可多语种版本切换(根据客户要求设置) Multi-language version switching (Set up according to customer requirements)
电源 Power	电压: 单相AC220V/380V 功率: 1.5KW, CMOS技术, 停电瞬间具有记忆功能 Voltage: Single phase AC 220-380V, Power:1.5KW CMOS technology, has the memory function at power-off moment

# 飞织鞋面机 B36-T1V

## 3D Flyknit Shoe Upper Knitting Machine



### Advantage 机器概述

1. 鞋面一线式成型, 整体效果更好。
2. 紧编、紧吊目可调; 鼓波、铲针、挑孔的稳定性高, 废片率少。
3. 滑屏触控, 操作更流畅。
4. 编织宽度36英寸, 总针数504枚, 适合生产单片或双片精品鞋面。

1. Vamp one-stop forming, the overall effect is better.
2. Adjustable tight knit and tight tuck, high stability of bump stitch, narrowing, pointelle, less waste fabric.
3. Touch screen is more visible and easy to operate.
4. Knitting width 36 inches, total needles 504 pcs, suitable for production of single or double pieces boutique shoe upper.

### Main Parameters

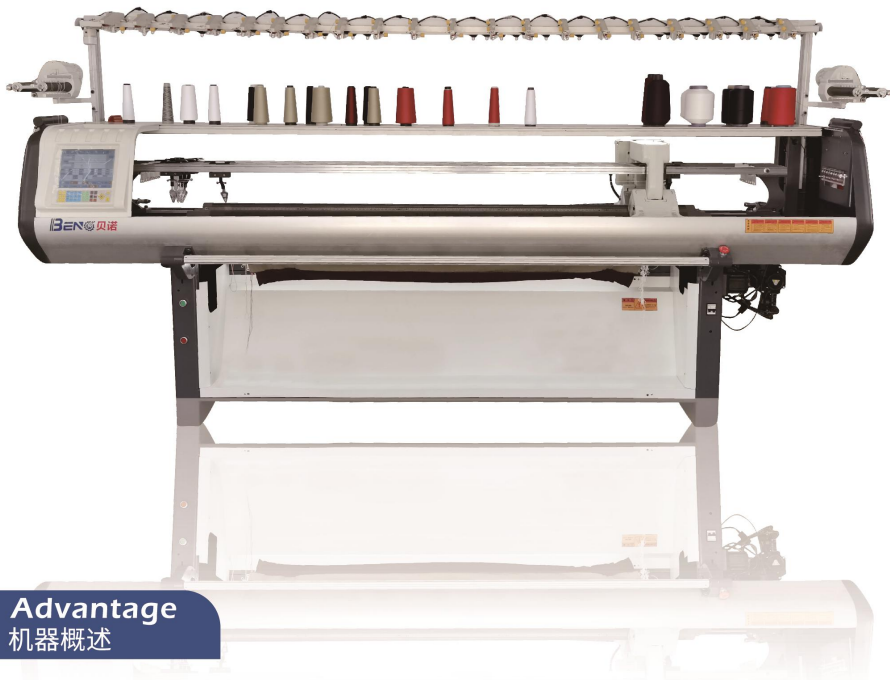
#### 主要技术参数

型号 Series	3D 飞织鞋面机 3D Flyknit Shoe Upper Knitting Machine
针距 Gauge	12G 14G 16G 18G
幅宽 Knitting Width	36" 52" 72"
编织系统 Knitting System	单机头双系统, 三系统 Single carriage with double system/three system
机器速度 Knitting Speed	最高速度1.6米/秒; 拥有32段可调速度 Max 1.6m/s, 32 section adjustable
编织功能 Knitting Function	翻针, 紧吊目, 可变量目, 挑孔, 嵌花, 提花, 明收针, 暗收针等花型编织 Transfer, tuck, intarsia, jacquard, hide, or apparent shaping and other regular or irregular patterns
翻针功能 Transfer cam	三角复合式设计, 单/双系统皆可单独或同时翻针, 也可一系统编织, 达到高效生产 The transfer cam is compose designed, single or double cam system all can transfer which will achieve to high production efficiency knit
摇床 Racking	马达驱动, 最大左右横移达2英寸 Motor drive, the maximum racking within 2 inches
选针器 Needle actuator	8段电子选针器 8 section electronic needle actuator
沉降片 Sinker	步进马达驱动, 交叉沉降片最新设计, 可根据不同织物进行调整 Driven by stepping motor, latest cross-sinker system design, Can be adjusted for different fabrics
收卷系统 Roller device	高位罗拉, 32段自动控制, 分段调节 High-order Roller, 32 section automatic control, subsection adjustable
针迹密度 Stitch density	32段电子控制, 步进马达控制调节密度, 可调节范围0-650 Controlled by 32 section electricity, density adjustment driven by stepping motor, the adjustable range:0-650
送纱装置 Yarn forward device	送纱器以及储纱器, 精确控制纱线张力, 确保整体织片质量 Yarn feeder and yarn storage device(optional), accurate control of yarn tension, to ensure the quality of the overall quality of the fabric
换色系统 Yarn feeder	2*8纱嘴组配置在4根双面导轨的左右两侧 2*8 yarn carriers are arranged on the left and right sides of the 4 double side guide rails.
传送装置 Transmission system	皮带传动, 交流伺服马达控制 Belt drive, AC servo motor control
资料输入 Data input	通过U盘、网络输入输出花型 Input and output patterns via USB, PC and Internet
自停装置 Protection system	断纱、纱结、卷布、撞针、件数完成、超负荷、指定行停车、程序错误等 Automatic stopping device if yarn broken, yarn knot, batching, striking, completion, overload, designated starting and stopping, program error
安全装置 Safety device	紧急停车装置; 切断电源装置; 报警指示灯; 全机覆盖降低噪音和防尘的护盖 (带有停车感应器) The whole machine cover to reduce noise and dust, the protecting cover is equipped with stopping sensor, emergency stopping and power off device
控制系统 Control system	恒强/睿能系统 Hengqiang/Raynen system 屏幕采用LCD触摸屏显示器, 图形化界面, 可存入大量花型文件, 并可根据生产需求随时调用使用 The screen adopts LCD touch screen display, graphical interface, can store a large number of pattern files, and can be called at any time according to production needs 通过屏幕检查页面可查看到三角的工作状态及实际位置; 并且在机器运行时随时进行调整, 最大限度方便操作。 Through the screen checking page, you can view the working status and actual position of the cam; and adjust it at any time while the machine is running, which is most convenient for operation 控制系统 (软件部分) 及制版系统升级方便, 为无偿服务 The control system (software part) and the pattern-making system are easily upgraded and are free of charge 可多语种版本切换(根据客户要求设置) Multi-language version switching (Set up according to customer requirements)
电源 Power	电压: 单相AC220V/380V 功率: 1.5KW, CMOS技术, 停电瞬间具有记忆功能 Voltage: Single phase AC 220-380V, Power:1.5KW CMOS technology, has the memory function at power-off moment



# 高速织领机 B80-D2C

## High Speed Collar Knitting Machine



### Advantage

#### 机器概述

1. 紧编、紧吊目可调；鼓波、铲针、挑孔的稳定性高，废片率少。
2. 对皮带轮传动结构进行了优化，采用了高质量伺服电机，大大提高了机头的速度。
3. 滑屏触控，操作更流畅。
4. 自动加油装置，定时定量润滑，更好维护，减少机器磨损，延长机器寿命。

1. Adjustable tight knit and tight tuck, high stability of bump stitch, narrowing, pointelle, less waste fabric.
2. The cam structure optimization, used the motor model, greatly improved the speed of needle transfer.
3. Touch screen is more visible and easy to operate.
4. Auto-lubricating system, regular and quantitative lubrication, better maintenance, less parts wear, extends longevity.

### Main Parameters

#### 主要技术参数

型号 Series	高速织领机	High Speed Collar Knitting Machine
针距 Gauge	12G 14G 16G	
幅宽 Knitting Width	52" 72" 80" 100"	
编织系统 Knitting System	单机头单系统, 1+1, 2+2	Single carriage single system / 1+1 two head double system / 2+2 two head four system
机器速度 Knitting Speed	最高速度1.6米/秒; 拥有32段可调速度	Max 1.6m/s, 32 section adjustable
编织功能 Knitting Function	翻针, 紧吊目, 可变量目, 挑孔, 嵌花, 提花, 明收针, 暗收针等花型编织	Transfer, tuck, intarsia, jacquard, hide, or apparent shaping and other regular or irregular patterns
翻针功能 Transfer cam	三角复合式设计, 单/双系统皆可单独或同时翻针, 也可一系统编织, 达到高效生产	The transfer cam is composite designed, single or double cam system all can transfer which will achieve to high production efficiency knit.
摇床 Racking	马达驱动, 最大左右横移达2英寸	Motor drive, the maximum racking within 2 inches
选针器 Needle actuator	8段电子选针器	8 section electronic needle actuator
沉降片 Sinker	步进马达驱动, 交叉沉降片最新设计, 可根据不同织物进行调整	Driven by stepping motor, latest cross-sinker system design, Can be adjusted for different fabrics
收卷系统 Roller device	高位罗拉, 32段自动控制, 分段调节	High-order Roller, 32 section automatic control, subsection adjustable
针迹密度 Stitch density	32段电子控制, 步进马达控制调节密度, 可调节范围0-650	Controlled by 32 section electricity, density adjustment driven by stepping motor, the adjustable range:0-650
送纱装置 Yarn forward device	送纱器以及储纱器(选配), 精确控制纱线张力, 确保整体织片质量	Yarn feeder and yarn storage device(optional), accurate control of yarn tension, to ensure the quality of the overall quality of the fabric
换色系统 Yarn feeder	2*8纱嘴组配置在4根双面导轨的左右两侧	2*8 yarn carriers are arranged on the left and right sides of the 4 double side guide rails.
传动装置 Transmission system	皮带传动, 交流伺服马达控制	Belt drive, AC servo motor control.
资料输入 Data input	通过U盘、网络输入输出花型	Input and output patterns via USB, PC and Internet
自停装置 Protection system	断纱、纱结、卷布、撞针、件数完成、超负荷、指定行停车、程序错误等	Automatic stopping device if yarn broken, yarn knot, batching, striking, completion, overload, designated starting and stopping, program error
安全装置 Safety device	紧急停车装置; 切断电源装置; 报警指示灯; 全机覆盖降低噪音和防尘的护盖(带有停车感应器)	The whole machine cover to reduce noise and dust, the protecting cover is equipped with stopping sensor, emergency stopping and power off device
控制系统 Control system	恒强/睿能系统	Hengqiang/Raynen system
	屏幕采用LCD触摸屏显示器, 图形化界面, 可存入大量花型文件, 并可根据生产需求随时调用使用	The screen adopts LCD touch screen display, graphical interface, can store a large number of pattern files, and can be called at any time according to production needs.
	通过屏幕检查页面可查看到三角的工作状态及实际位置; 并且在机器运行时随时进行调整, 最大限度方便操作。	Through the screen checking page, you can view the working status and actual position of the cam; and adjust it at any time while the machine is running, which is most convenient for operation.
	控制系统(软件部分)及制版系统升级方便, 为无偿服务	The control system (software part) and the pattern-making system are easily upgraded and are free of charge.
	可多语种版本切换(根据客户要求设置)	Multi-language version switching (Set up according to customer requirements)
电源 Power	电压: 单相AC220V/380V 功率: 1.5KW, CMOS技术, 停电瞬间具有记忆功能	Voltage: Single phase AC 220-380V, Power: 1.5KW CMOS technology, has the memory function at power-off moment

# 产品细节 Product Details



电子天线架  
Electronic Wire Racks

当报警器报警时,系统会自动打开灯和报警器  
As the yarms knot, the system turns on the light and alarm automatically



储纱器  
Yarn Storage

储纱器可以在储存一定量的纱线,纱线即将用完时会亮灯报警,提醒工作人员及时补充纱线。在编织毛衣片时会非常有用。  
The yarn storage device can store a certain amount of yarn, and when the yarn is about to run out, the light will alarm to remind the staff to replenish the yarn in time. It will be very useful when knitting



显示屏

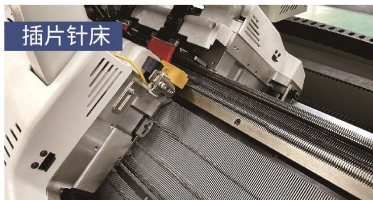


伺服电机  
Servo Motor

精密的伺服电机能精准控制机头运转与停留位置,实现机头快速往返运转,其使用寿命可达10年以上。



直选针床



插片针床

针床有两种:直选针式与插片式。分体设计,与针磨部分的插片采用进口钢材经精冲与研磨制造而成,减少与针脚的磨损,降低针脚阻力,有效提高编织效率。

There are two types of needle beds: milling flute method and insert model. Separate design,the insert of needle grinding part is made of imported steel by fine stamping and grinding, which reduces wear and tear



侧面张力器  
Side Tensioner

侧面张紧器是最后一个纱线张力控制装置,当机器运行时,侧张紧器监控纱线和它的张力,同时收起在编织过程中由于滑架改变方向或其他原因造成的松弛纱线。

Side tensioner is the last yarn tension controller device, when the yarn is running, side tensioner van monitor the yarn and it tension, and meanwhile put away relax yarn which cause by carriage changes



输纱器  
Yarn Provider

滚筒送纱器能有效减少送纱线时的阻力,特别适用于弹性较差或脆性较大的织物,如羊绒、兔绒等纱线的织物使织物组织均匀,提高机器纺织效率。

Active yarn feeder can effectively reduce the resistance of yarn feeding, especially for fabrics with poor elasticity or brittleness, such as cashmere,rabbit hair and other yarns. Fabric has uniform weave,which improves the efficiency of machine weaving.



自动供油系统  
Automatic Refueling

自动加油,24小时智能呵护机器(电机、全电脑控制)  
Automatic refueling,24-hour intelligent care machine(motor, full computer control)



LCD触屏屏  
Touch Screen

采用LCD工业显示器显示器图形化界面彩色显示工作时可显示编织件数、编织时间、速度、罗拉、度目、沙嘴等各种工作参数并在机器运转时能随时进行调整所需数据,最大限度方便操作及节约时间,使您在关注织物的同时输入机器命令方便在机器上修改工作参数及改变花型。

With LCD displaythe displayis capable of showing pictures with colors,displaying number ofpieces, finished pieces,knittingtime,speedroller, mesh-numbers,yan nozzleetcwhich can be adjusted any time during the operation of the machineThis saves the time and brings ultimate convenience to the operation making it possible for the operators to take care of the fabrics and put in directives to the machines at the same time.This the modification to the woring parameters and change of patterns be come easily done on the machine.



# 横机易损零配件

## Wear-prone Parts

这些零件在横机工作过程中会有磨损，导致某些功能使用不良，我们可以免费随机器附送，并且视频教导如何更换零件。

These parts will wear out during the operation of the machine and cause some functions of the machine to be used poorly, we can offer them with the machine for free and video instruction on how to replace the parts.



**Knitting Needle**  
织针



**Yarn Feeder**  
纱嘴



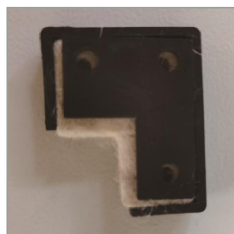
**Needle Selection**  
选针器



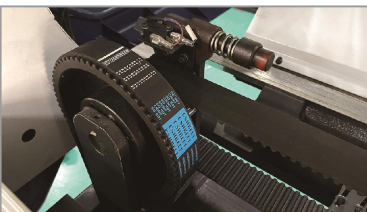
**Driving Magnet**  
驱动磁铁



**Brush**  
毛刷



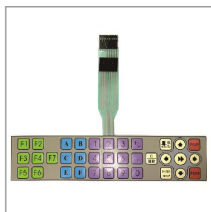
**Felt**  
毛毡



**Drive Belts**  
传动带



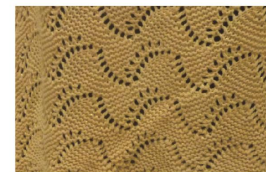
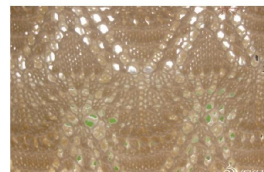
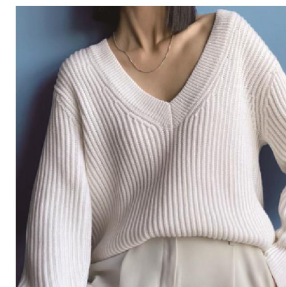
**Roller Cover**  
罗拉皮



**Keyboard Pad**  
触摸屏按键板

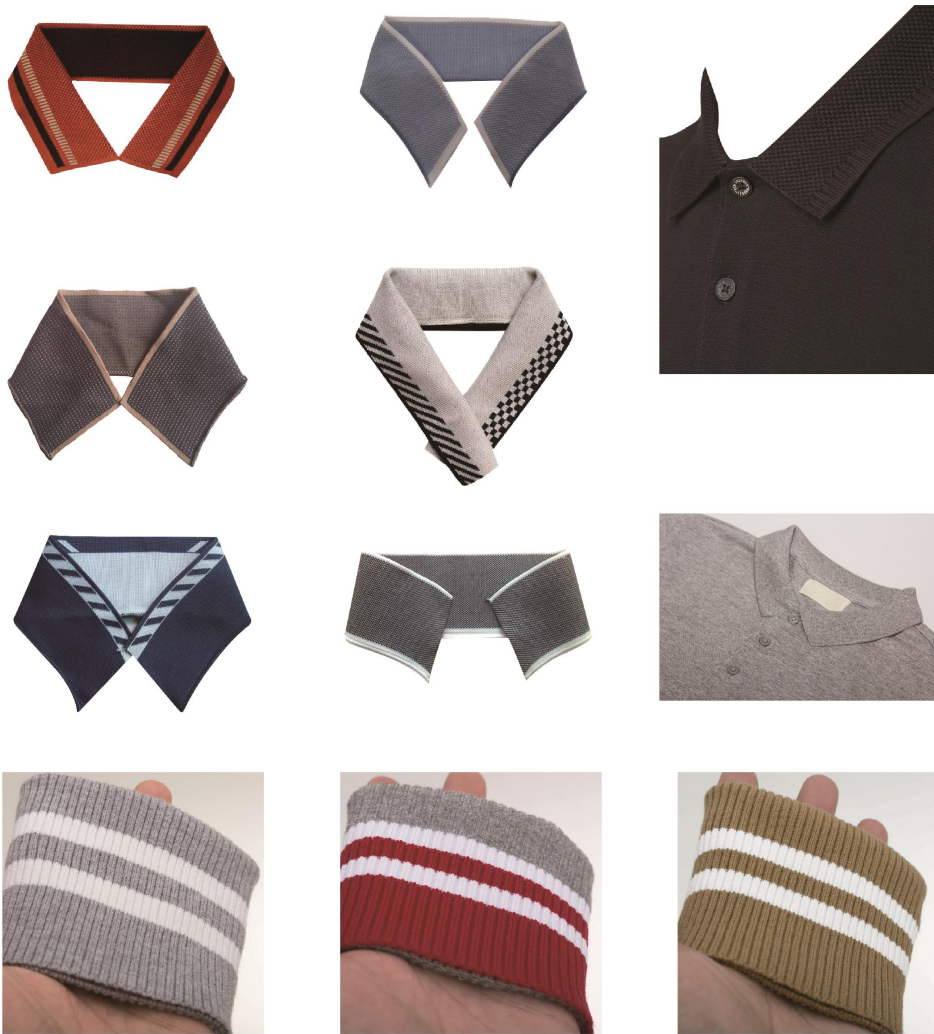
# 毛衣编织

## Knitting Sweater



# 领口、袖口编织

## Knitting Collar, Cuff



# 鞋面编织

## Knitting Shoe Vamp

